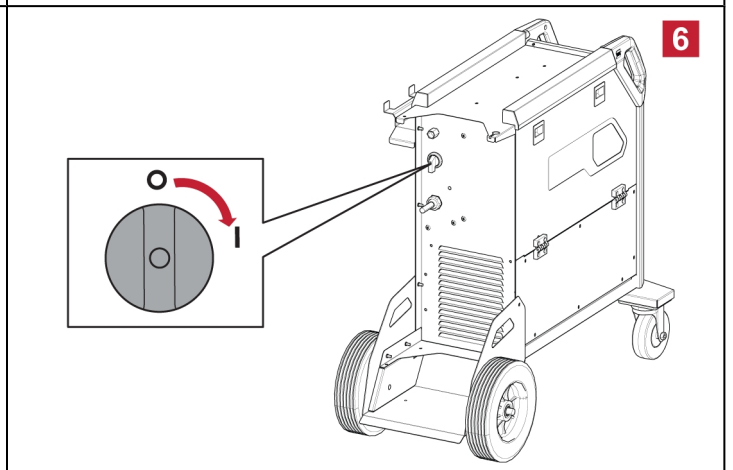
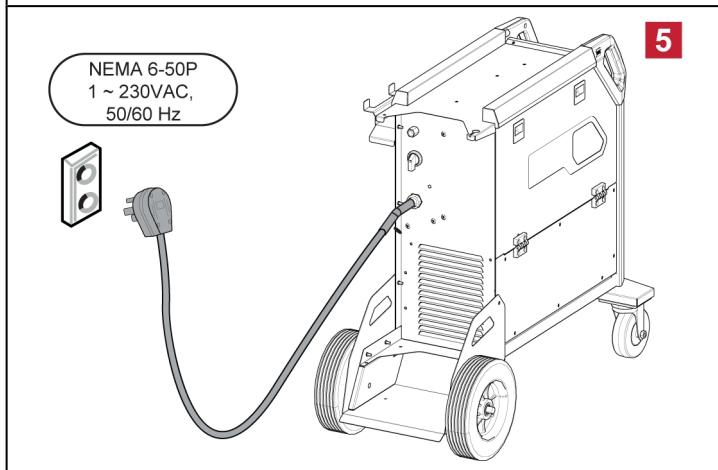
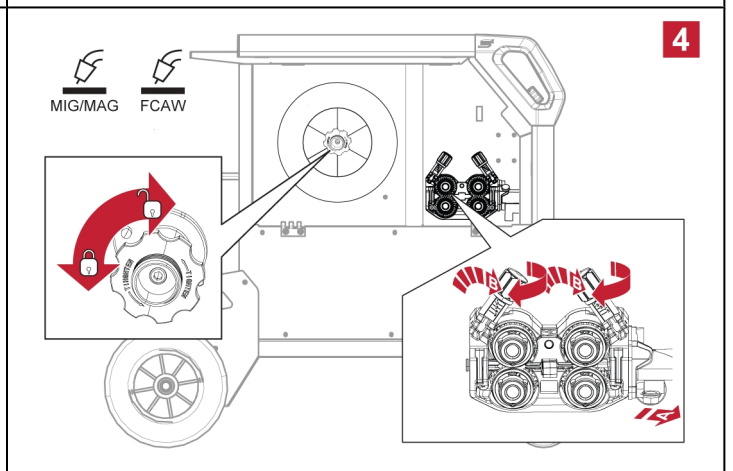
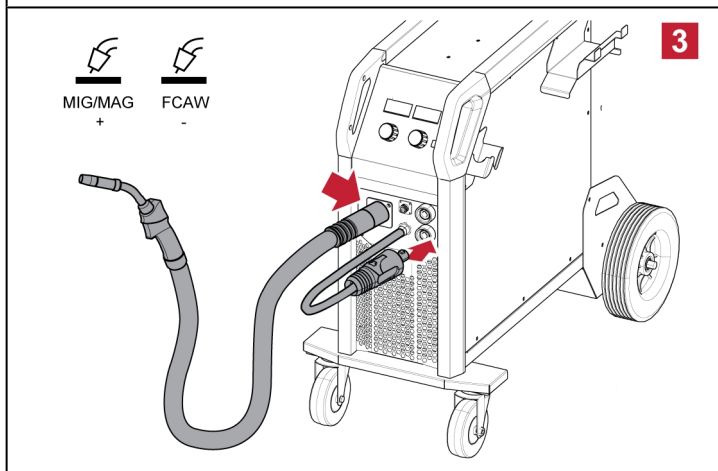
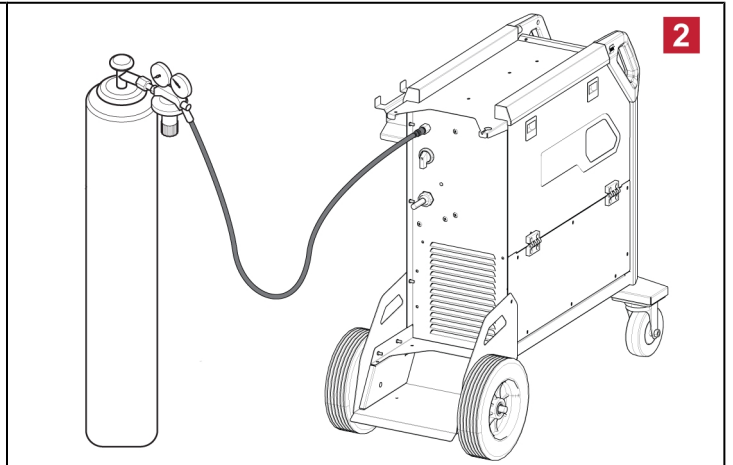
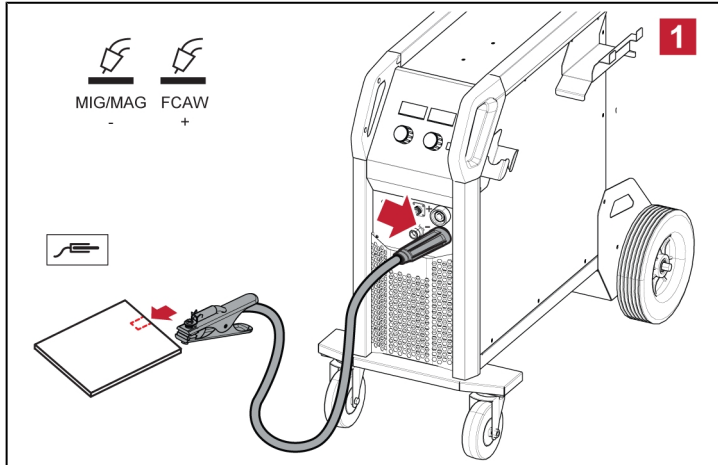
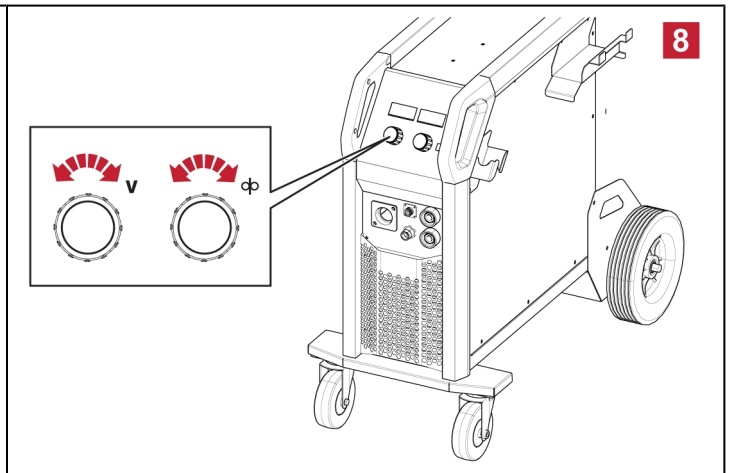
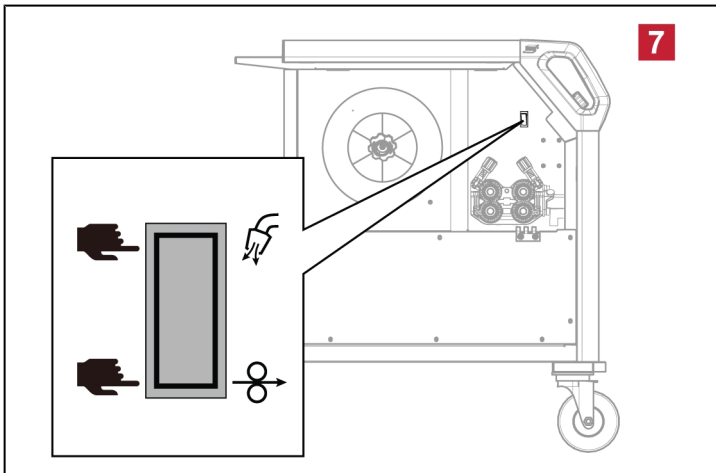


# Rustler EM 280 PRO



## Quick Start Guide

0448 533 001 GB 20241216



|     |                  |           |
|-----|------------------|-----------|
| B-B | Burnback         | 0.01-0.35 |
| CRA | Crater fill time | 0.0-9.9   |
| PRG | Pre-flow         | 0.0-9.9   |
| POG | Post-flow        | 0.0-9.9   |
| RIN | Creep start      | ON/OFF    |
| SPO | Spot             | 0.0-9.9   |
| STI | Stitch           | 0.0-9.9   |
| DWT | Dwell-time       | 0.0-9.9   |

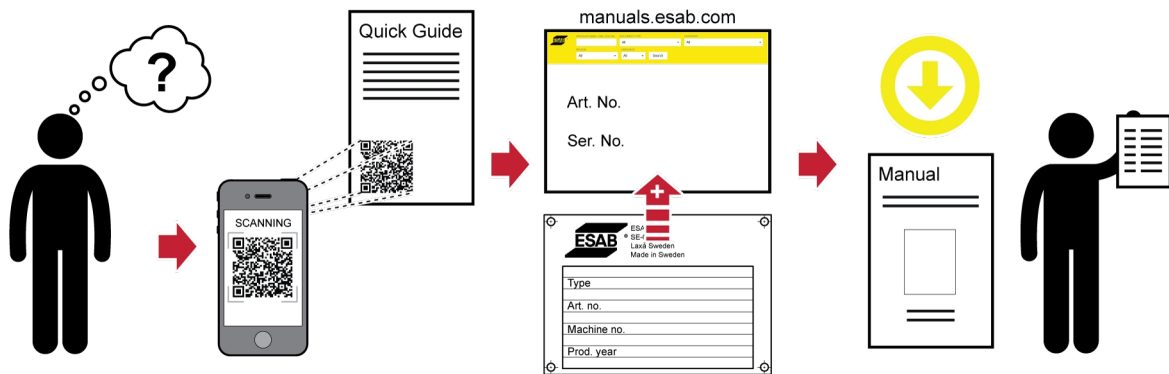


WE CARE ABOUT THE ENVIRONMENT

FIND YOUR MANUAL ONLINE

manuals.esab.com





For contact information visit [esab.com](http://esab.com)

ESAB Corporation, 2800 Airport Road Denton, TX 76207, USA, Phone +1 800 378 8123

[manuals.esab.com](http://manuals.esab.com)

